

Industrial Tract

7.37 Acres

T Elmer Cox Dr

Greeneville, Tennessee 37743



Property Features

- Industrial development tract at the end of T Elmer Cox Drive in Greeneville's Mt. Pleasant Industrial Park.
- A paved private drive enters the property along the eastern property boundary, on an easement.
- 2018 Property Taxes (city and county) \$546.42
- Zoned M-2 High Impact

Location

- Mt. Pleasant is a 175-acre industrial park located nine miles from Interstate 81. The park, built in 1991, is at full capacity and is currently home to Jost International, Packaging Services, Inc., Huf-North America, TI Automotive Group, CVN Vooner, RPC, Landair, Innovative Fabrication and Crown Tonka.
- Inside the city limits of Greeneville

OFFERING PRICE:

\$48,000

For more information:

Sam Tate, CCIM

865 777 3035 • state@koellamoore.com

For Sale

7.37 Acre Industrial Tract



Property Summary

Electric Service:	Greeneville Light and Power 423-636-6200
Water:	Old Knoxville Highway Utility District 423-422-1660
Wastewater:	Town of Mosheim 423-422-4051
Gas:	Atmos Energy 888-286-6700

Property Overview

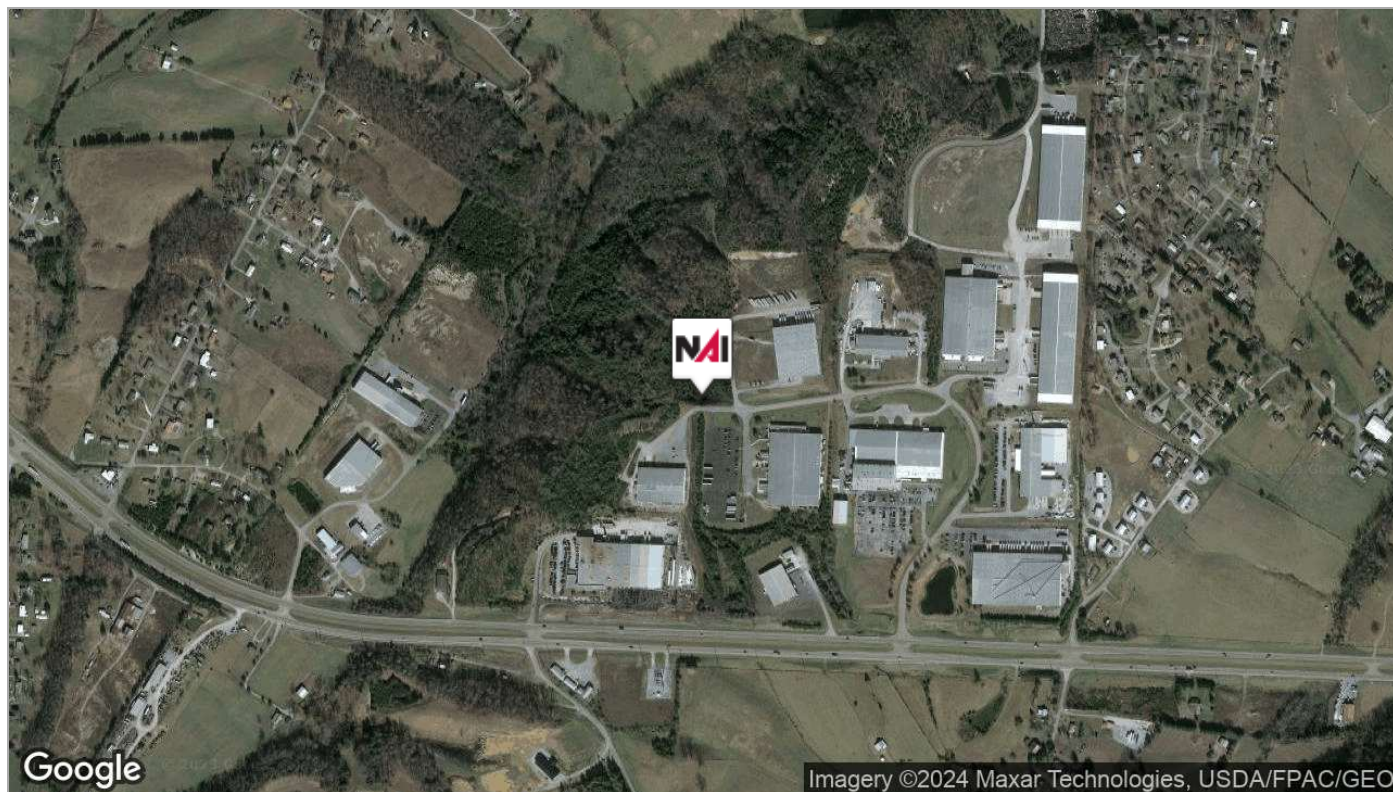
Subject property is the last undeveloped tract in Mt. Pleasant Industrial Park.

Location Overview

Greeneville has historically been very strong in manufacturing and continues to have a heavy industrial base in Northeast Tennessee.

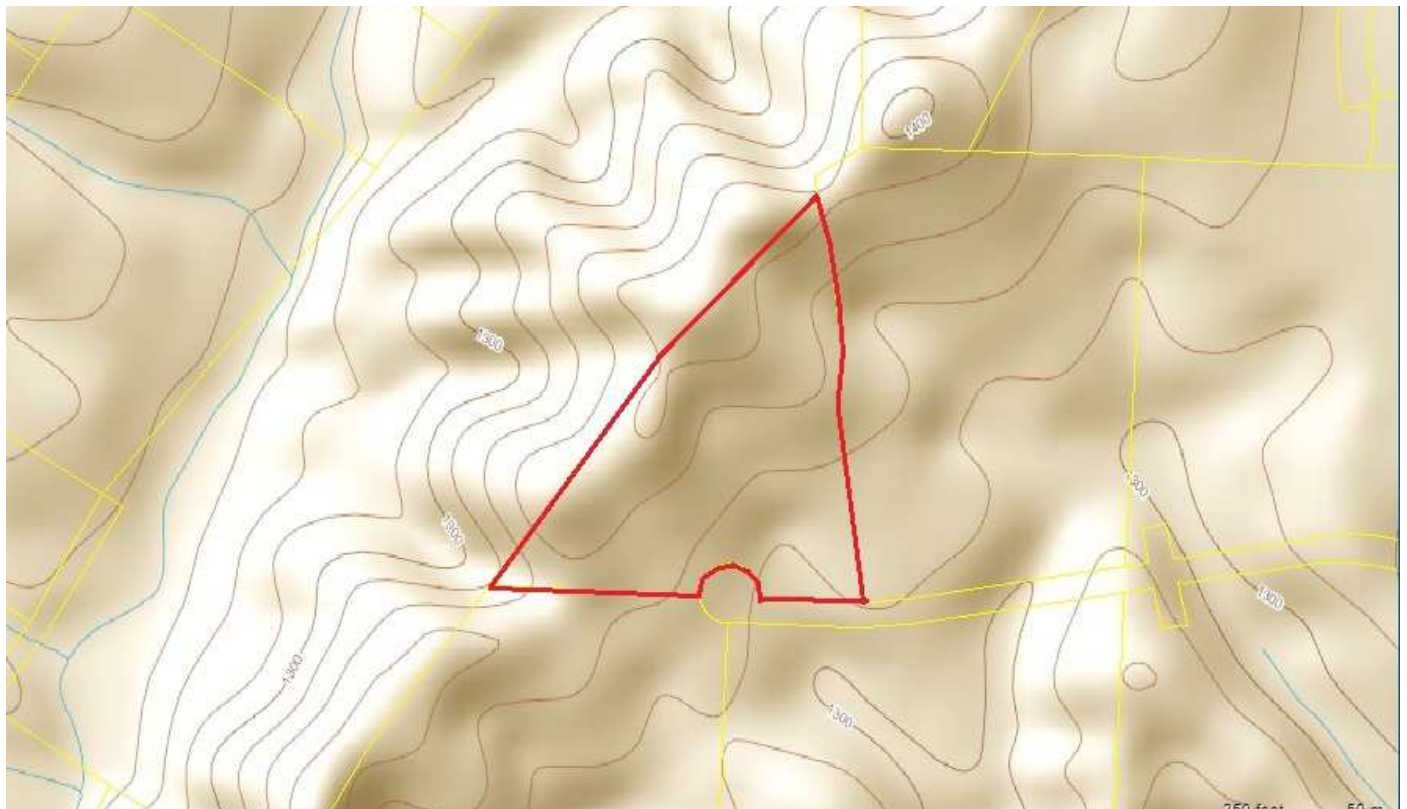
For Sale

7.37 AC Industrial Development Tract



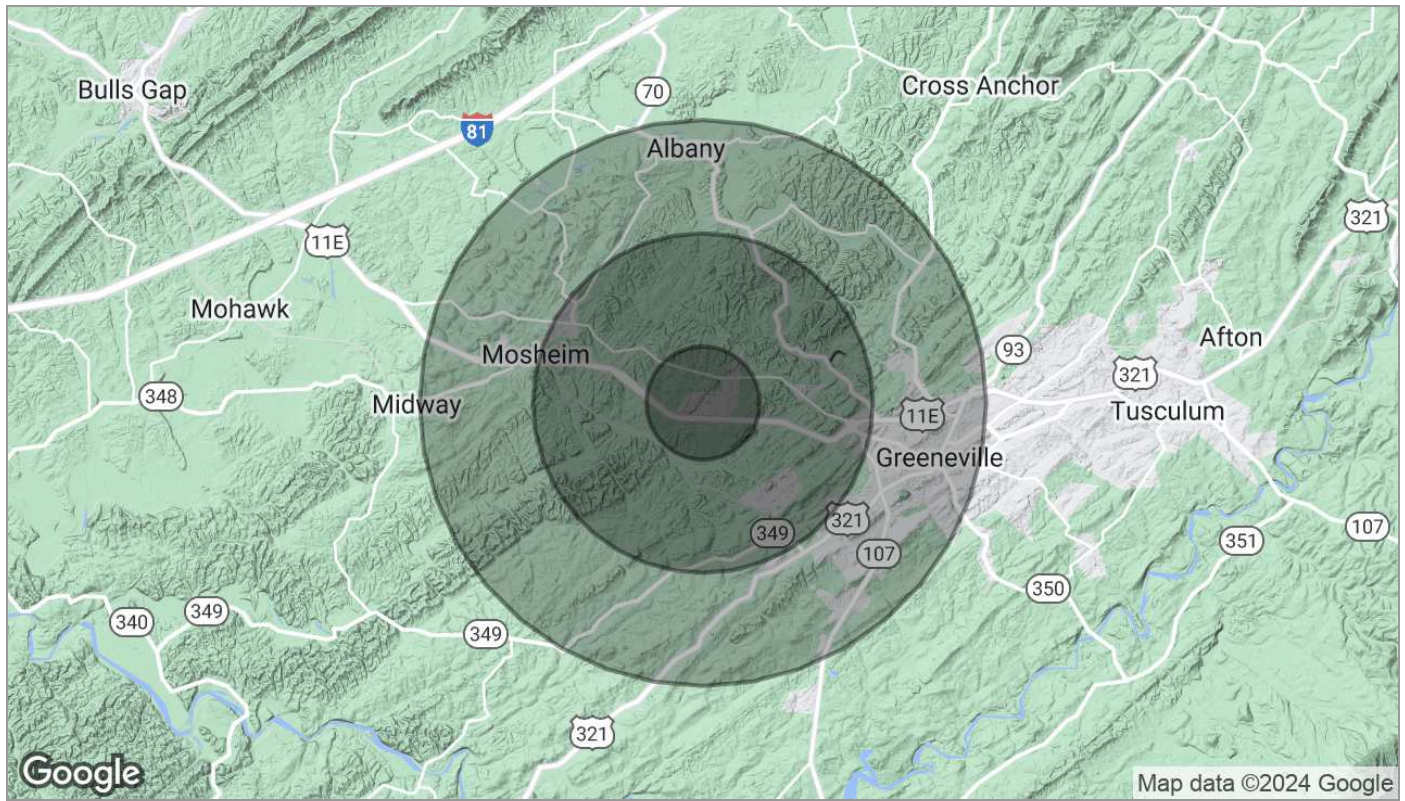
For Sale

7.37 AC Industrial Development Tract



For Sale

7.37 AC Industrial Development Tract



Population	1 Mile	3 Miles	5 Miles
TOTAL POPULATION	1,023	5,870	13,898
MEDIAN AGE	42.0	41.7	41.7
MEDIAN AGE (MALE)	37.4	38.1	38.8
MEDIAN AGE (FEMALE)	44.4	43.8	43.7
Households & Income	1 Mile	3 Miles	5 Miles
TOTAL HOUSEHOLDS	417	2,406	5,760
# OF PERSONS PER HH	2.5	2.4	2.4
AVERAGE HH INCOME	\$34,293	\$38,565	\$42,058
AVERAGE HOUSE VALUE	\$112,611	\$113,972	\$112,906
Race	1 Mile	3 Miles	5 Miles
% WHITE	91.2%	93.6%	95.2%
% BLACK	8.1%	5.7%	3.9%
% ASIAN	0.1%	0.2%	0.2%
% HAWAIIAN	0.0%	0.0%	0.0%
% INDIAN	0.0%	0.1%	0.1%
% OTHER	0.2%	0.2%	0.4%
Ethnicity	1 Mile	3 Miles	5 Miles
% HISPANIC	2.3%	1.9%	2.4%

* Demographic data derived from 2020 ACS - US Census